

SS270V

COMFORT EFFICIENT EPITOME VALUES



QUALITY **NEW MASTERPIECE**
CHANGES THE WORLD
品质改变世界



● **Rated Power**
53.7 kW / 73 hp

● **Operating Weight**
4250 kg / 9370 lb

● **Rated Operating Capacity**
1290 kg / 2850 lb

● **High Flow**
125L/min / 33 gpm

KEY FEATURES

● Comfortable ride

Spacious and well-sealed cab with noise levels low. Upward-opening door for convenient access.

● Intelligent operation

Stable driving and automatic leveling systems with hydraulic pilot control and DA power distribution technology for precise movements.

● Efficient performance

Vertical lift structure with high unloading height, dual-speed configuration, and quick transition speed for fast and efficient work.

● Versatile use

Standard and high-flow output options with various attachments available, such as buckets, sweepers, snow removers, millers, and augers, to meet different job requirements.

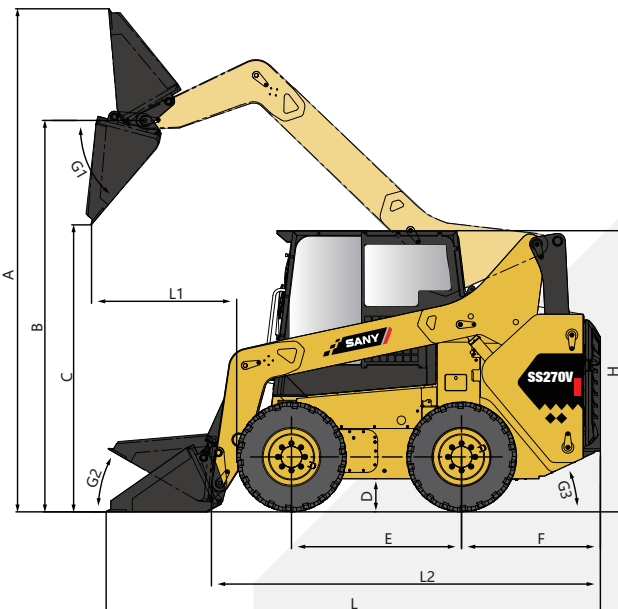
PERFORMANCE PARAMETERS

SS270V

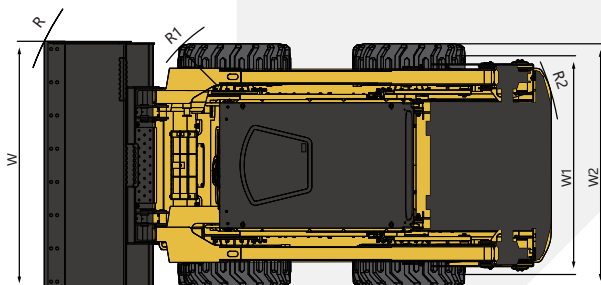
Engine Model	Yanmar 4TNV98CT	Rated Operating Capacity	1290 kg / 2850 lb
Engine Speed	2400 rpm	Tipping Load	2580 kg / 5700 lb
Rated Power	53.7 kW / 73 hp	Operating Weight	4250 kg / 9370 lb
Peak Torque	280 N.m / 206 lbf-ft at 1560 rpm	Breakout Force, Tilt Cylinder	28.8 kN / 6670 lb
Displacement	3.319 L / 203 in ³	One Speed	11.1 km/h / 6.9 mph
Aspiration	Turbo-charger	Two Speed	20 km/h / 12.4 mph
Emissions	Tier 4 Final	Tire Size	12-16.5 14 PR
Cycle Time (Raise/Lower/Dump)	9.3 s	Standard Flow	90 L/min / 23.8 gpm
Loader Hydraulic Pressure	23 MPa / 3336 psi	High Flow	125 L/min / 33 gpm
Battery Voltage	12 V	Lift Geometry	Vertical Lift
Diesel Tank	100 L / 26.4 gal	Cab	FOPS & ROPS

OVERALL MACHINE SIZE

SS270V



A Maximum Overall Height	4200 mm / 165.5 in
B Bucket Pin Height at Maximum Lift	3350 mm / 132 in
C Clearance at Maximum Lift and Dump	2620 mm / 103.2 in
L1 Reach at Maximum Lift and Dump	985 mm / 38.8 in
D Ground Clearance	228 mm / 9 in
E Wheelbase	1300 mm / 51.2 in
F Bumper Overhang behind Rear Axle	1050 mm / 41.4 in
R Turning Radius from Center-Bucket	2230 mm / 87.9 in
R1 Turning Radius from Center-Coupler	1352 mm / 53.3 in
R2 Turning Radius from Center-Machine Rear	1733 mm / 68.3 in
G1 Maximum Dump Angle	43 °
G2 Rollback Angle of Bucket on Ground	30 °
G3 Departure Angle	25 °
L2 Length without Bucket	2991 mm / 117.8 in
L Length with Bucket on Ground	3756 mm / 148 in
W1 Tread Over Gauge with Spec Tires	1485 mm / 58.5 in
W2 Width without Bucket	1820 mm / 71.7 in
W Width with Bucket	1880 mm / 74.1 in
H Height to Top of Cab	2100 mm / 82.7 in



Sany Industry Town, Economical and Technological
Development Zone, Kunshan, Jiangsu, China
Zip Code: 215300
Web: <http://www.sanyglobal.com>